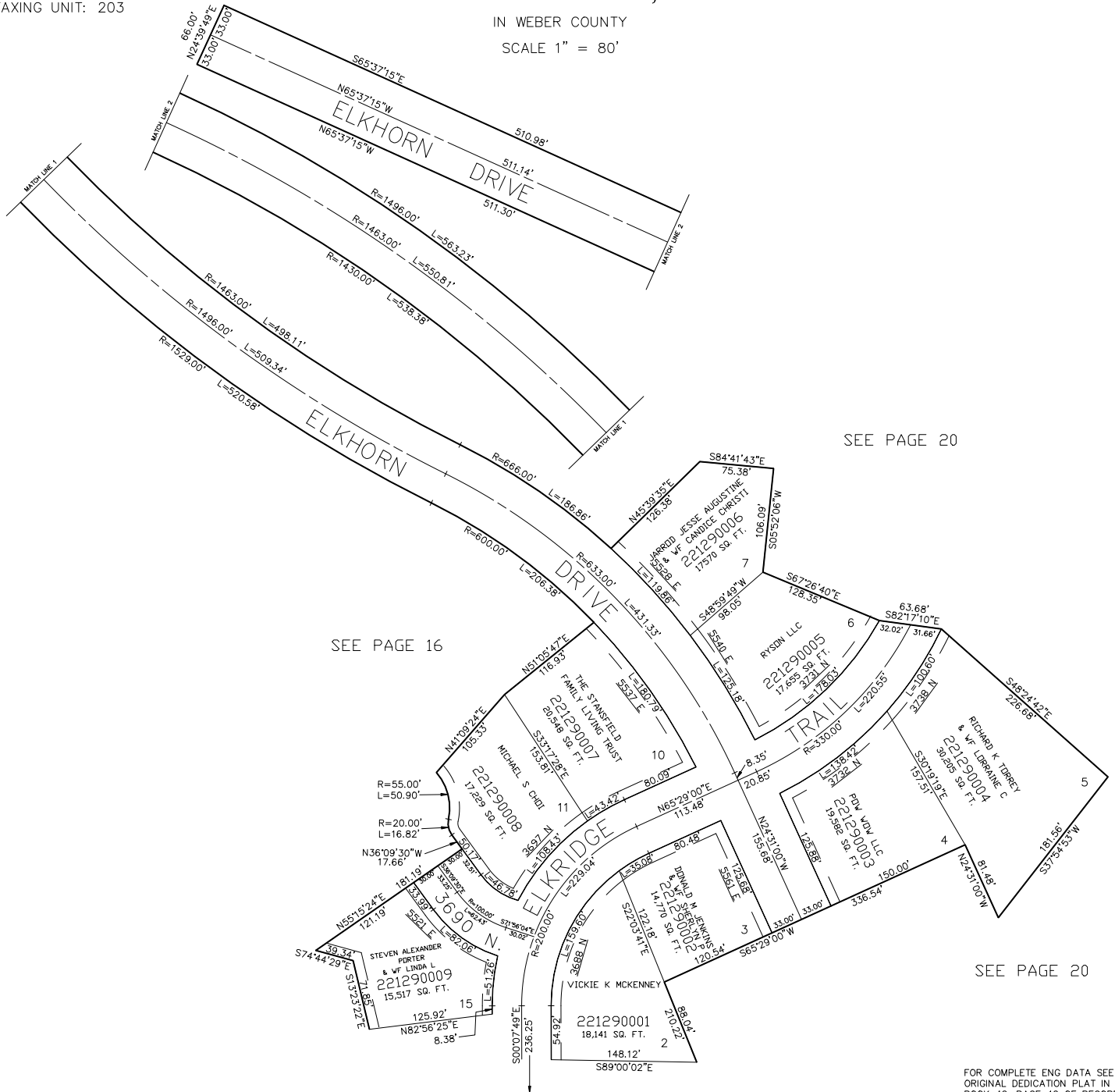


PART OF THE S.E. 1/4 OF SEC. 22, AND PART OF THE S.W. 1/4 OF SEC. 23,
T.7N., R.1E., S.L.B. & M.

ELKHORN SUBDIVISION, PHASE 1

TAXING UNIT: 203

IN WEBER COUNTY
SCALE 1" = 80'



SEE PAGE 20

SEE PAGE 16

SEE PAGE 20

FOR COMPLETE ENG DATA SEE
ORIGINAL DEDICATION PLAT IN
BOOK 42, PAGE 42 OF RECORDS.

10' UTILITY & DRAINAGE EASEMENTS EACH
SIDE OF PROPERTY LINES AS INDICATED
BY DASHED LINES EXCEPT AS OTHERWISE
SHOWN.

SEE PAGE 128